

Dehazing using Non-Local Regularization with Iso-Depth Neighbor-Fields

Supplemental Material

Incheol Kim

Min H. Kim

Korea Advanced Institute of Science and Technology (KAIST)

Comparison

Effect of Combining NNFs with Other Methods

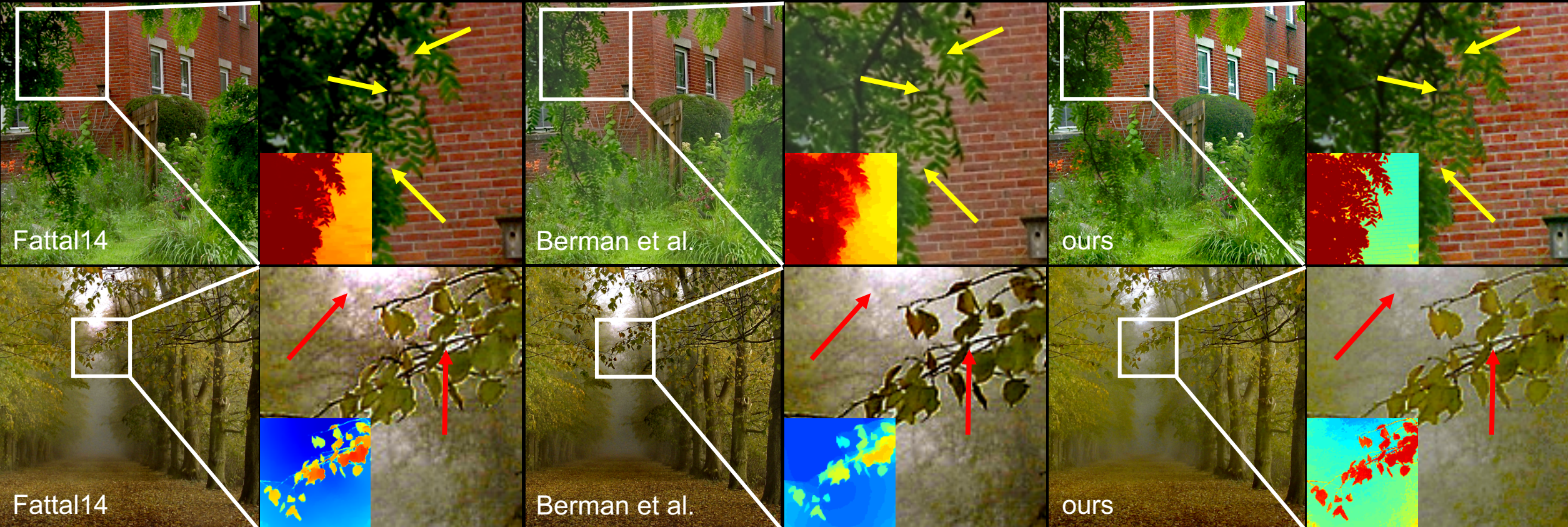


Figure 5 in the paper

Internal Comparison

Effect of Combining NNFs



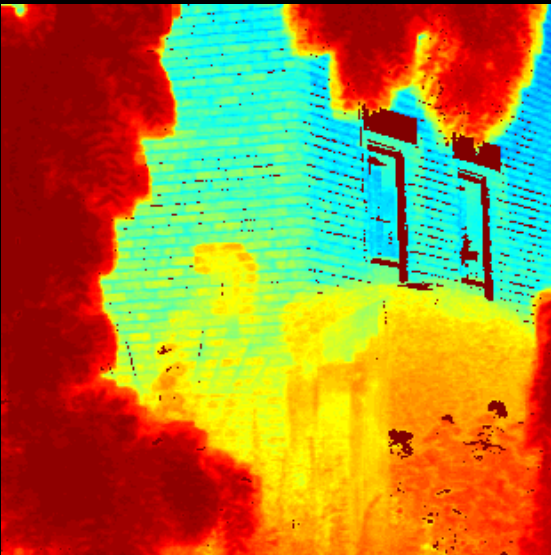
input



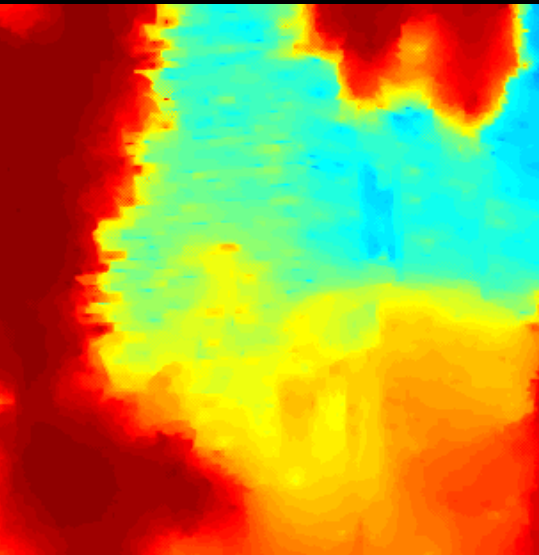
Without NNFs



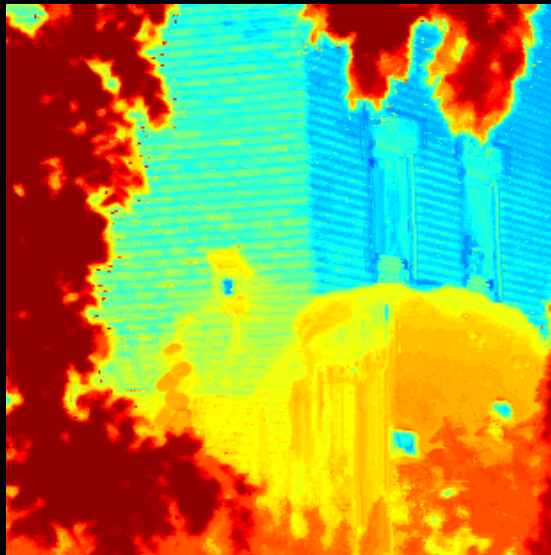
With NNFs



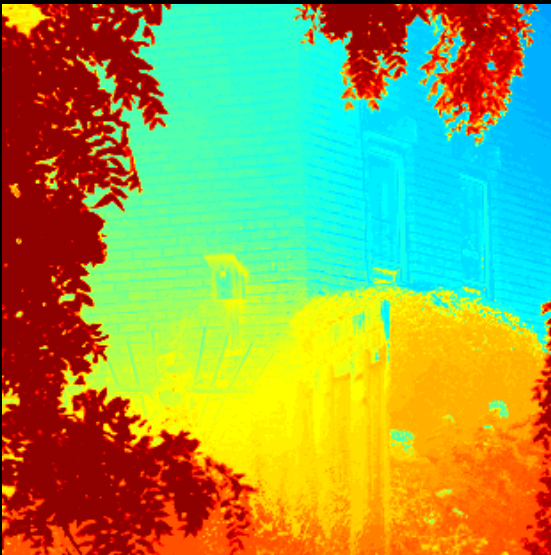
Initial estimates



Without NNFs



With NNFs



With NNFs and WMF

Comparison

Regularization

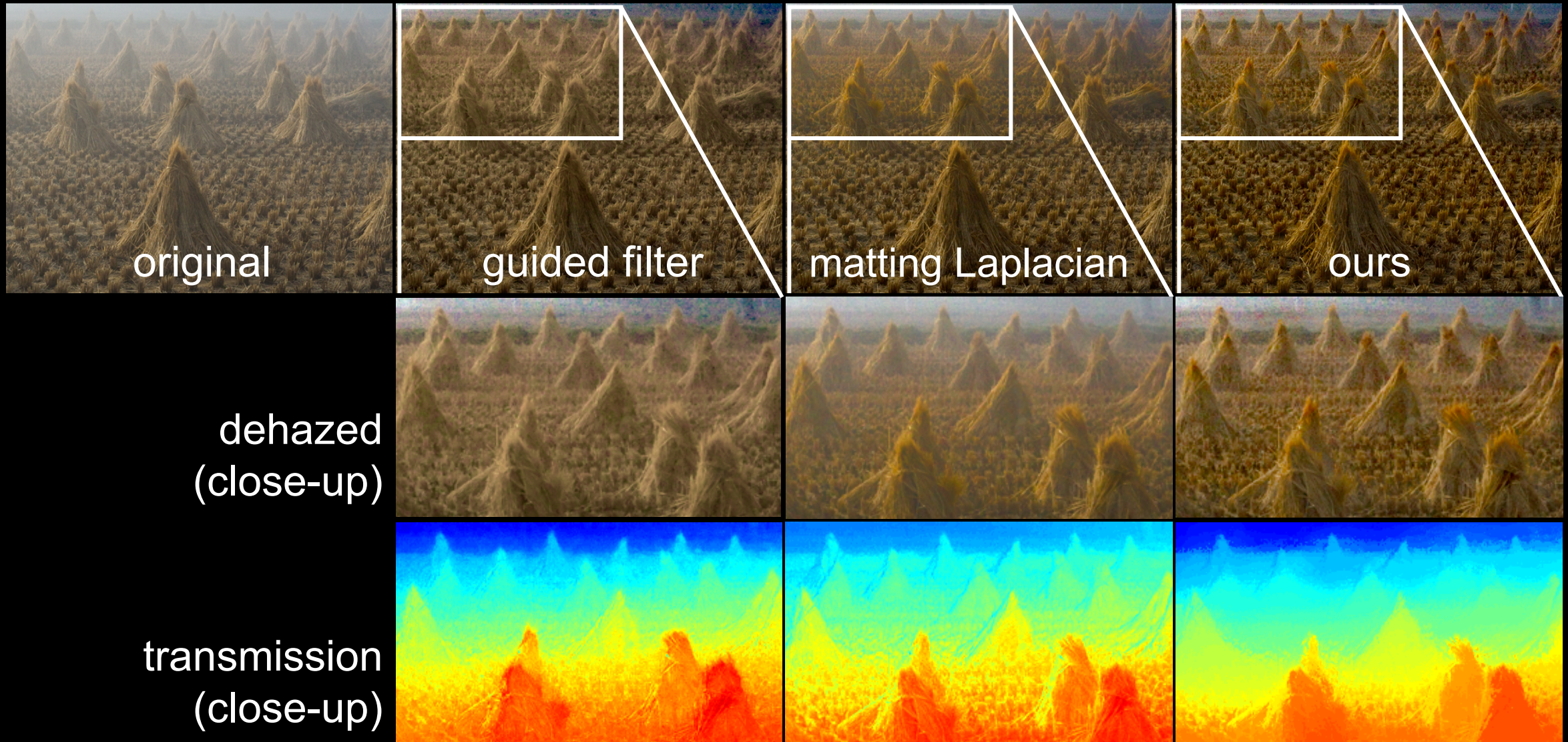


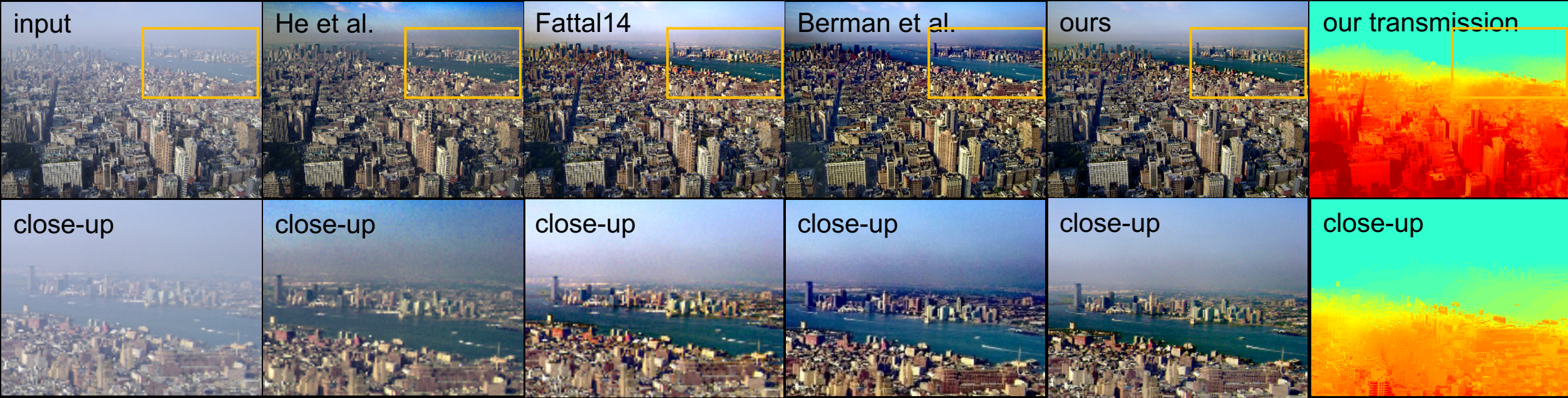
Figure 7 in the paper

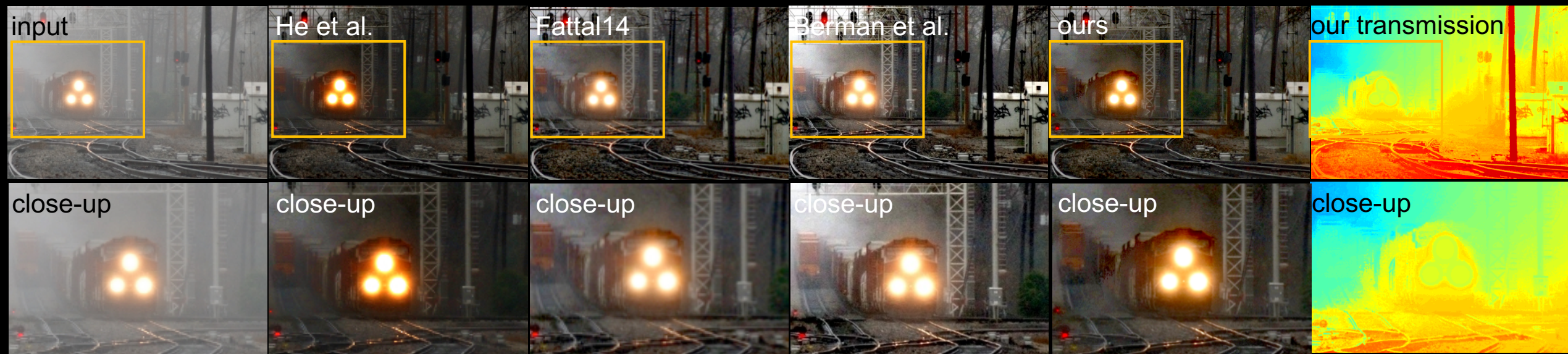
Qualitative Comparison

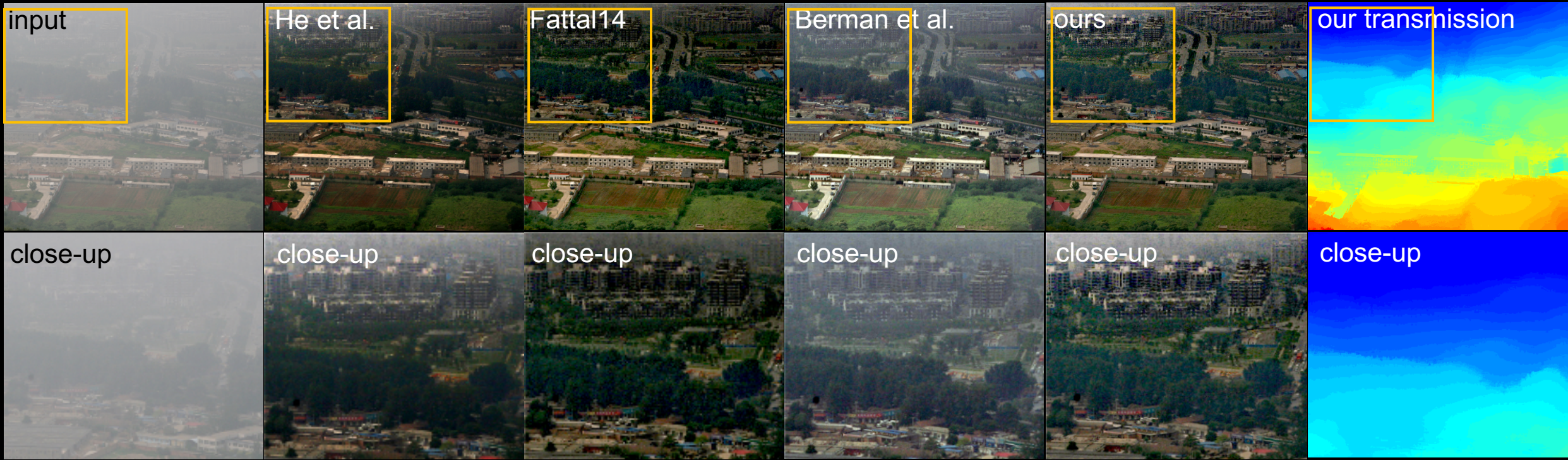
Single Image Dehazing

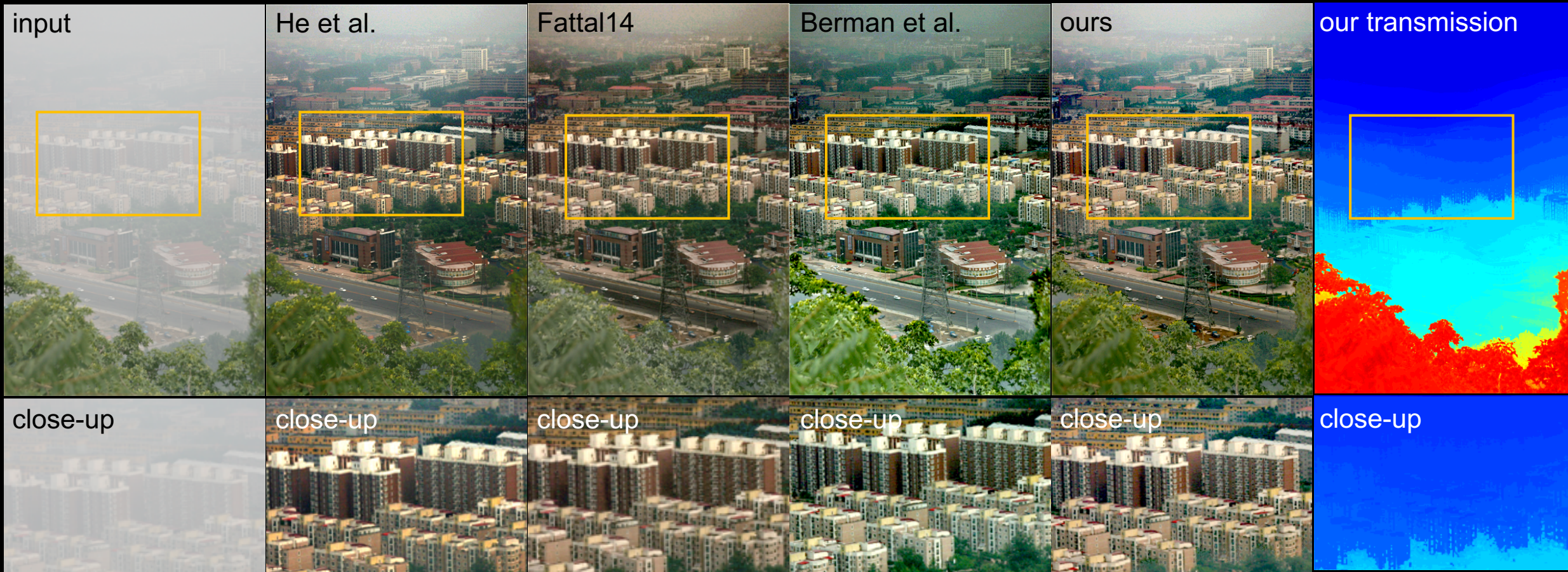


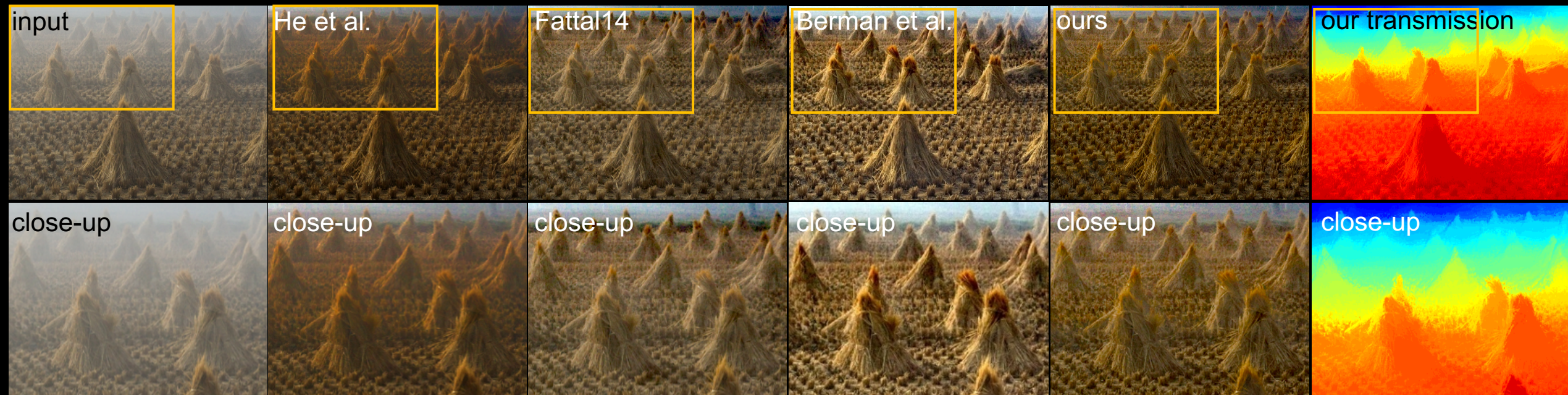












input



He et al.



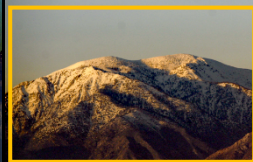
Fattal14



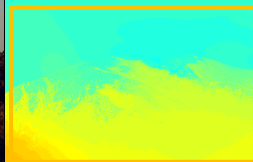
Berman et al.



ours



our transmission



close-up



close-up



close-up



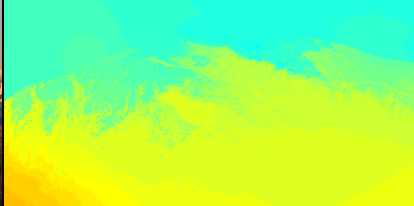
close-up

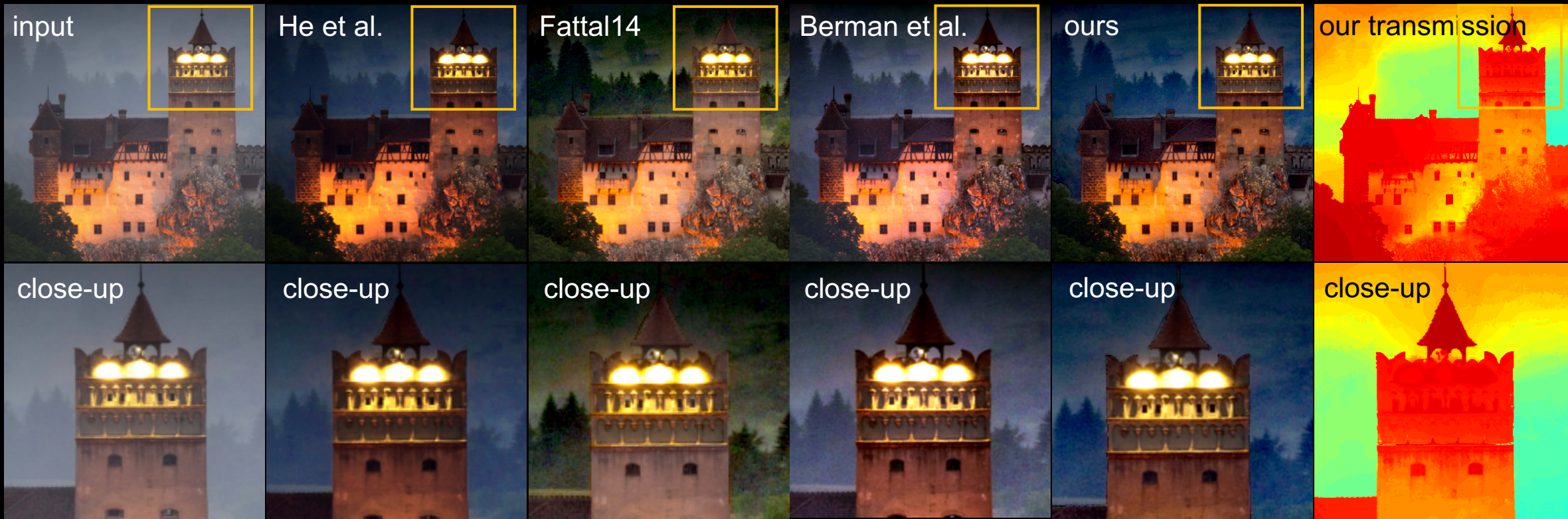


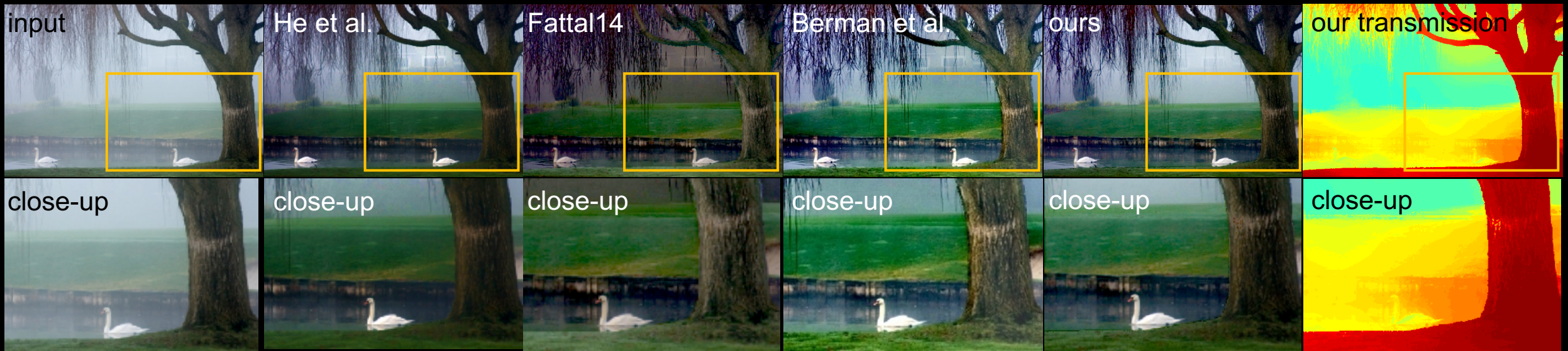
close-up

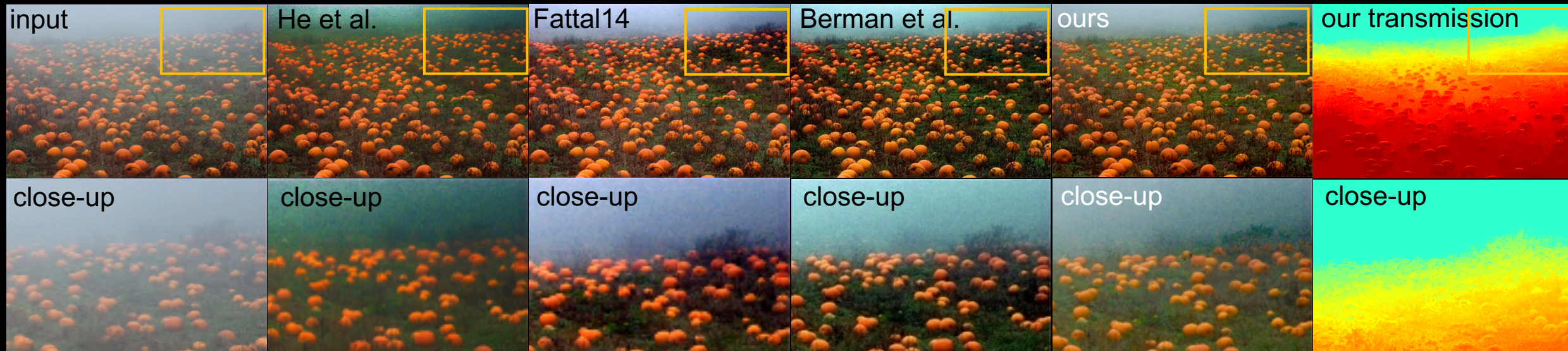


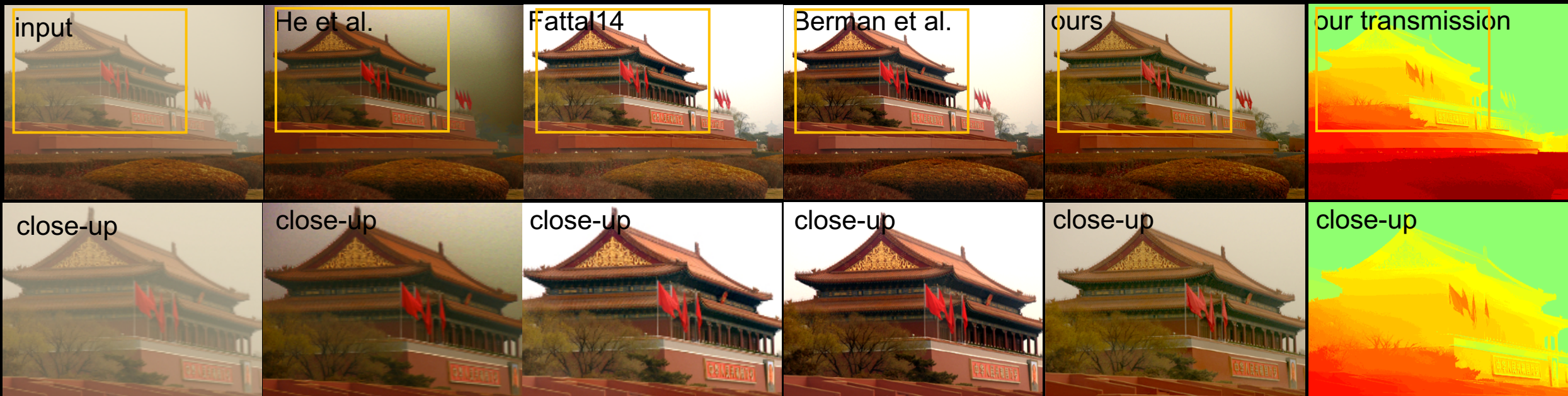
close-up

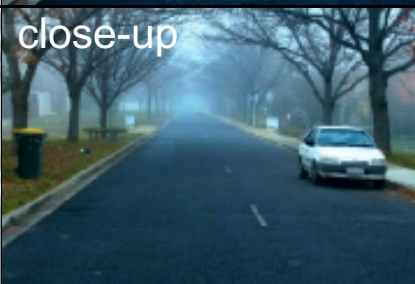
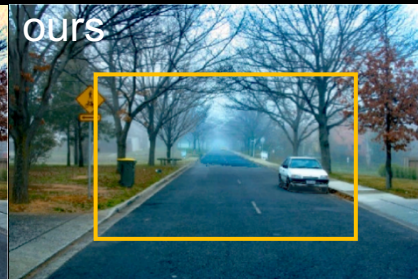
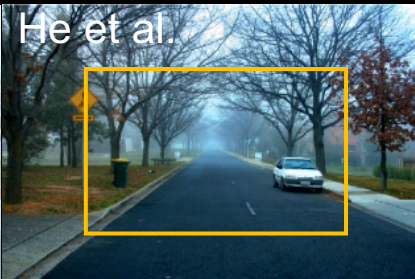
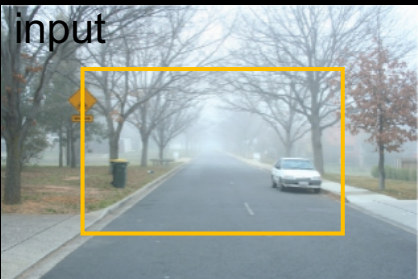


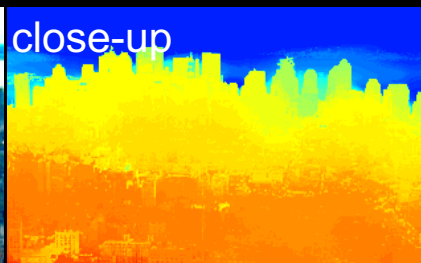
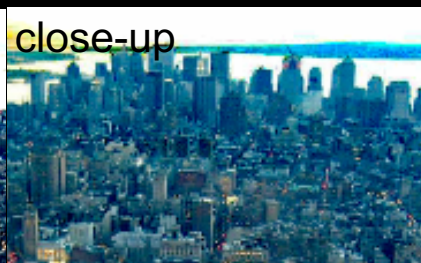
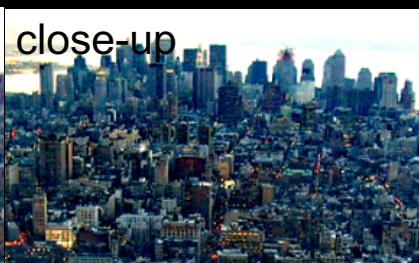
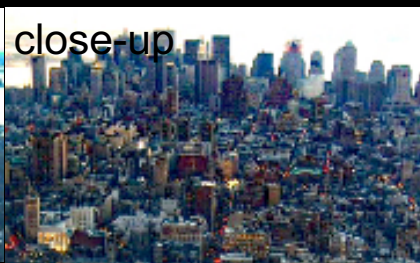
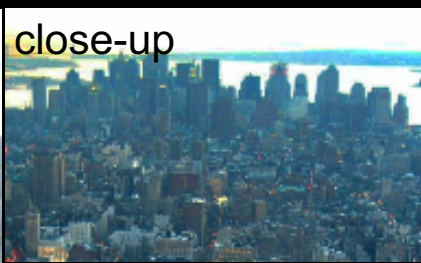
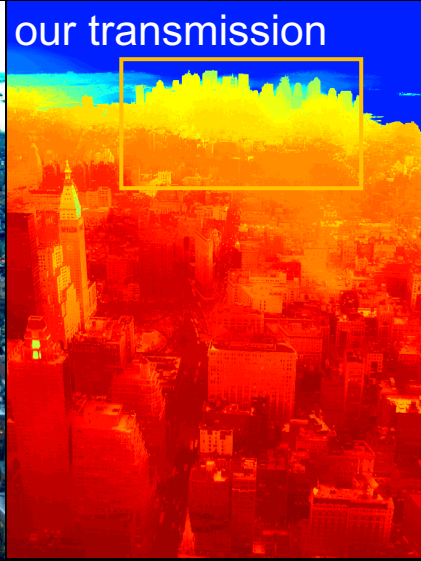


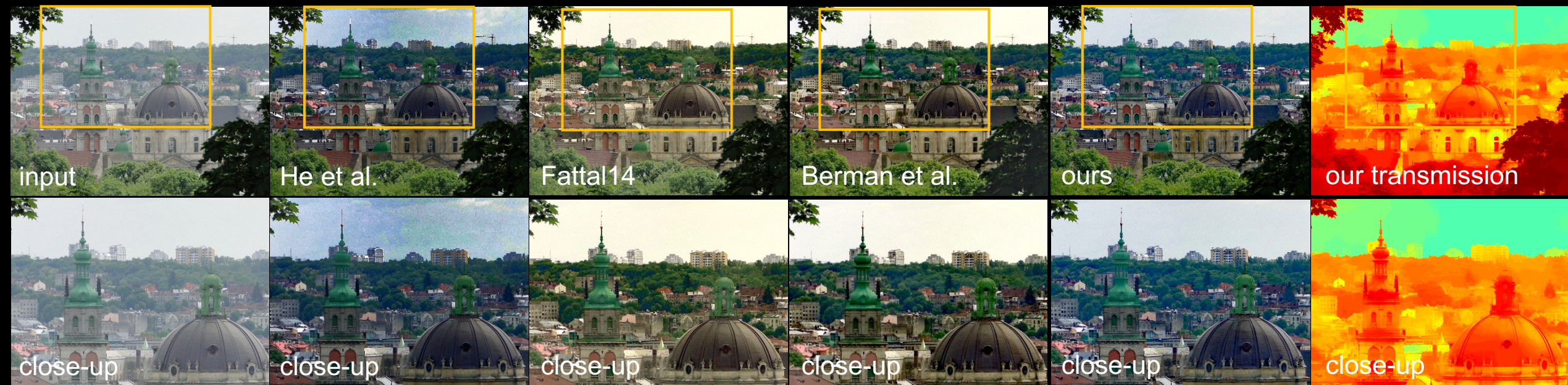


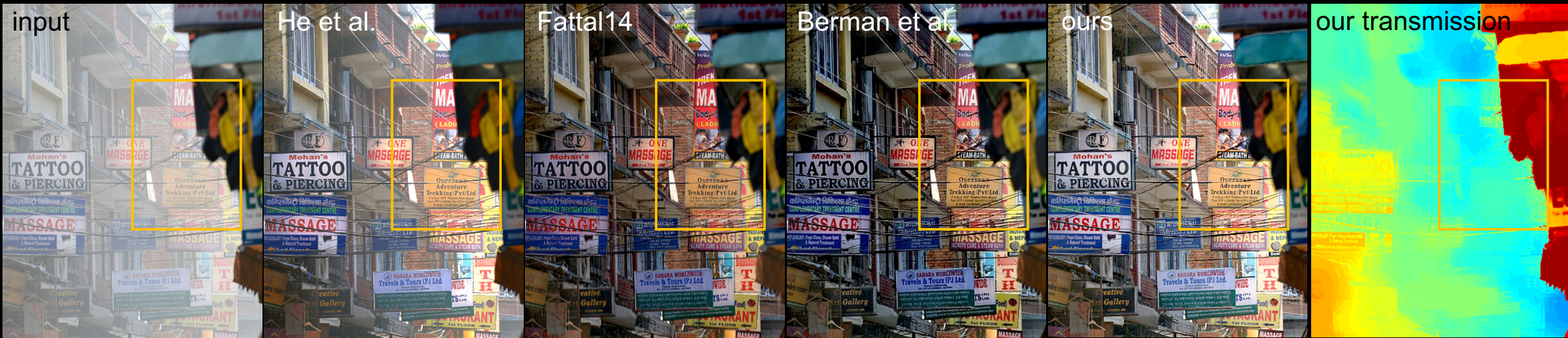


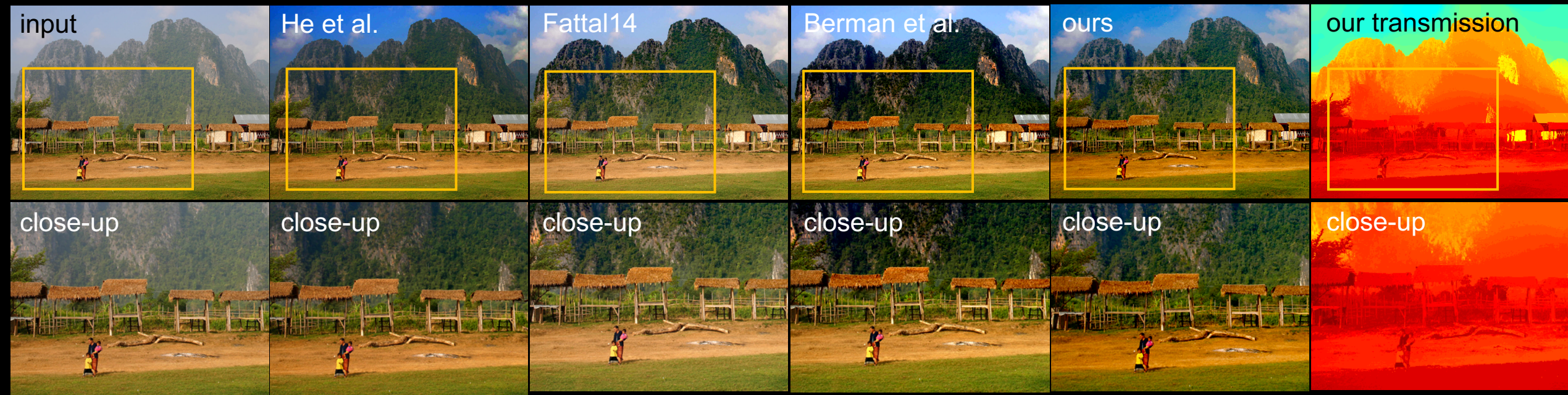












Quantitative Comparison

Single Image Dehazing

hazy input

ground truth

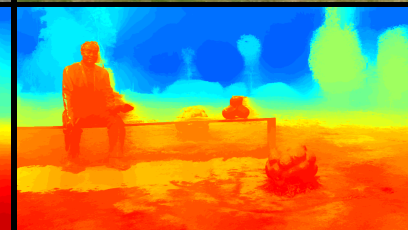
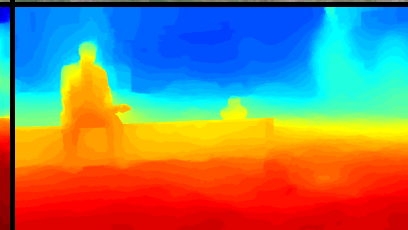
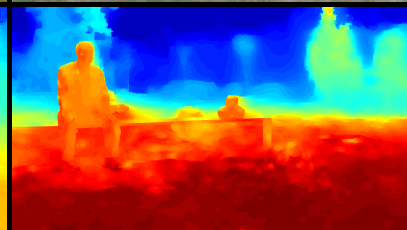
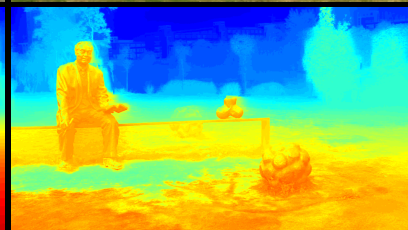
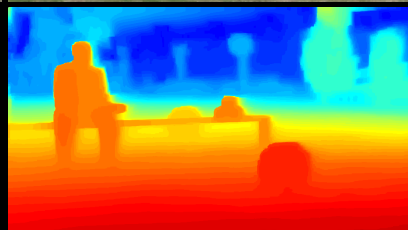
He et al.

Fattal14

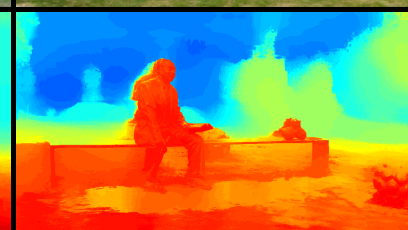
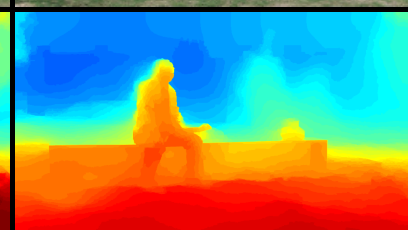
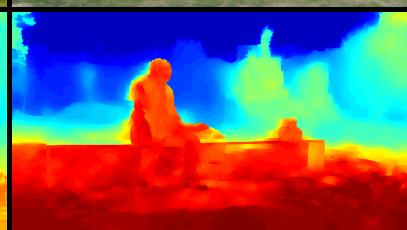
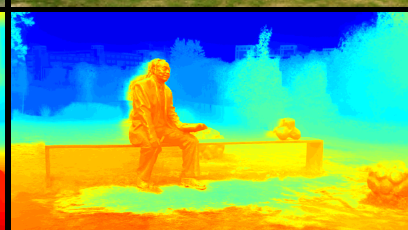
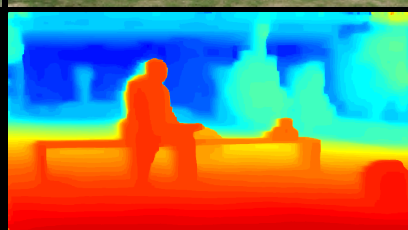
Berman et al.

ours

lawn1



lawn2



mansion

hazy input

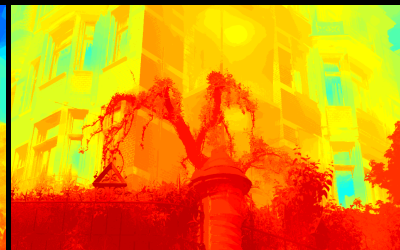
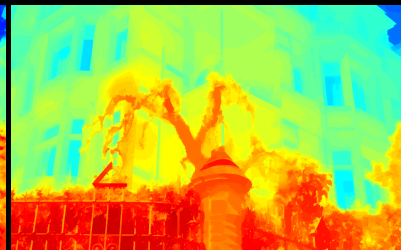
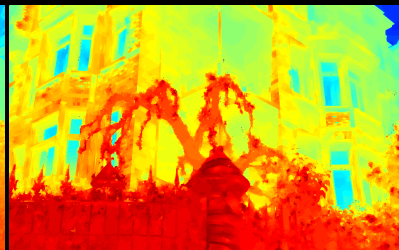
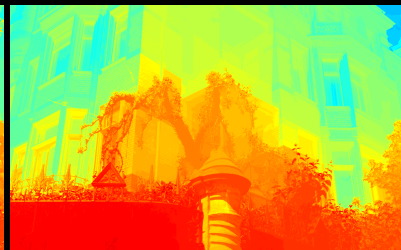
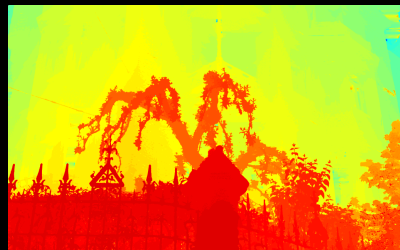
ground truth

He et al.

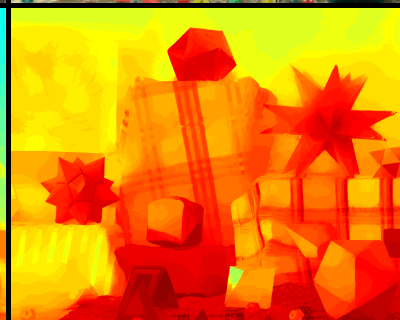
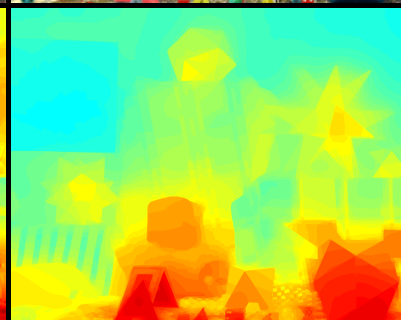
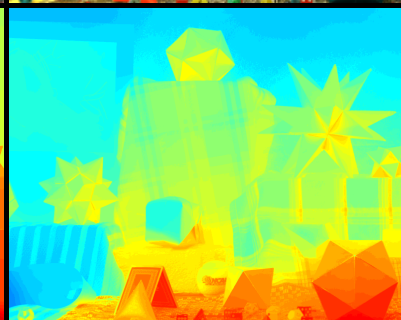
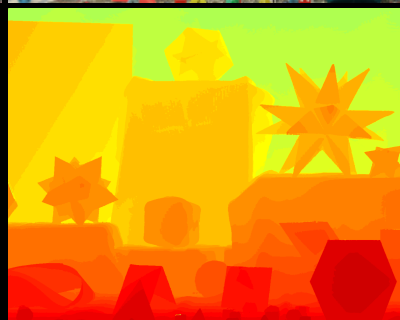
Fattal14

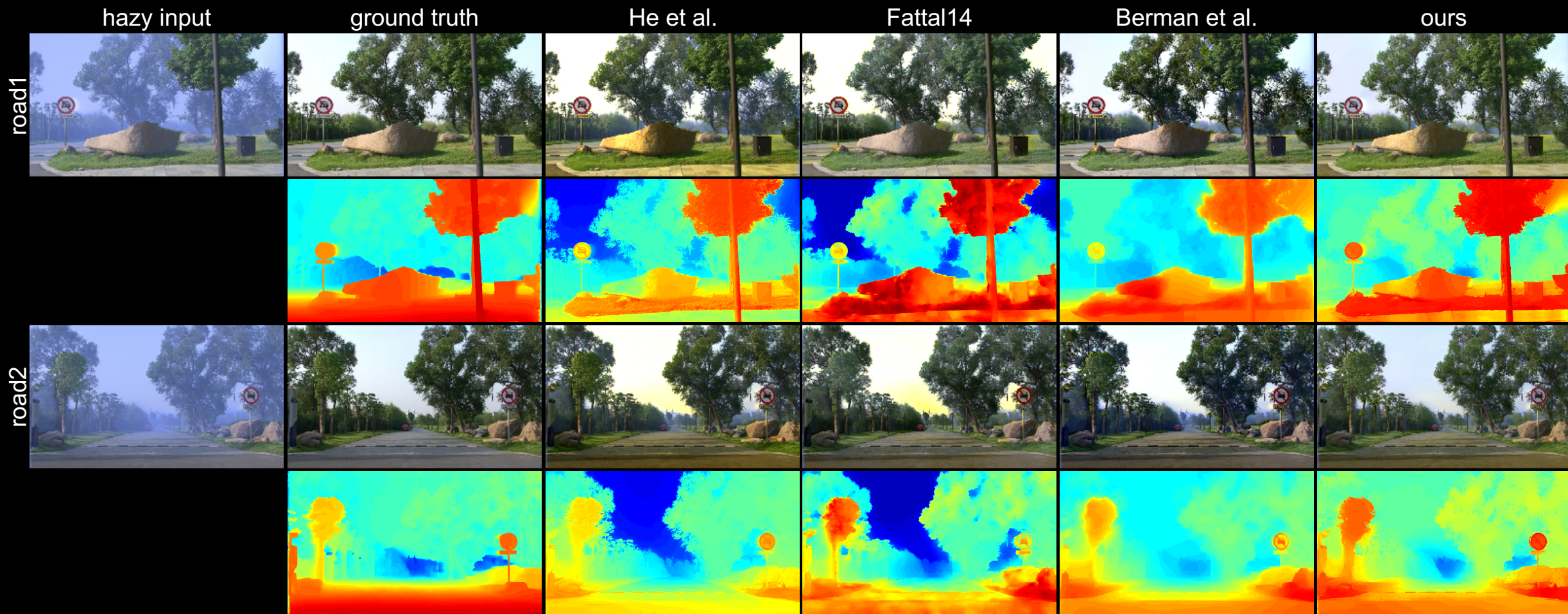
Berman et al.

ours



moebius





L1 error

| | He et al. | Fattal14 | Berman et al. | ours |
|----------|---------------|---------------|---------------|---------------|
| church | 0.0711/0.1765 | 0.1144/0.1726 | 0.1152/0.2100 | 0.1901/0.1854 |
| couch | 0.0631/0.1146 | 0.0895/0.1596 | 0.0512/0.1249 | 0.0942/0.1463 |
| flower1 | 0.1639/0.2334 | 0.0472/0.0562 | 0.0607/0.1309 | 0.0626/0.0967 |
| flower2 | 0.1808/0.2387 | 0.0418/0.0452 | 0.1154/0.1413 | 0.0570/0.0839 |
| lawn1 | 0.1003/0.1636 | 0.0803/0.1189 | 0.0340/0.1289 | 0.0604/0.1052 |
| lawn2 | 0.1111/0.1715 | 0.0851/0.1168 | 0.0431/0.1378 | 0.0618/0.1054 |
| mansion | 0.0616/0.1005 | 0.0457/0.0719 | 0.0825/0.1234 | 0.0614/0.0693 |
| moebius | 0.2079/0.3636 | 0.1460/0.2270 | 0.1525/0.2005 | 0.0823/0.1138 |
| reindeer | 0.1152/0.1821 | 0.0662/0.1005 | 0.0887/0.2549 | 0.1038/0.1459 |
| road1 | 0.1127/0.1422 | 0.1028/0.0980 | 0.0582/0.1107 | 0.0676/0.0945 |
| road2 | 0.1110/0.1615 | 0.1034/0.1317 | 0.0602/0.1602 | 0.0781/0.1206 |
| average | 0.1181/0.1862 | 0.0839/0.1180 | 0.0783/0.1567 | 0.0836/0.1152 |

(l1 error of estimated transmission/l1 error of estimated dehazed image)

Internal Comparison

Various Patch Sizes

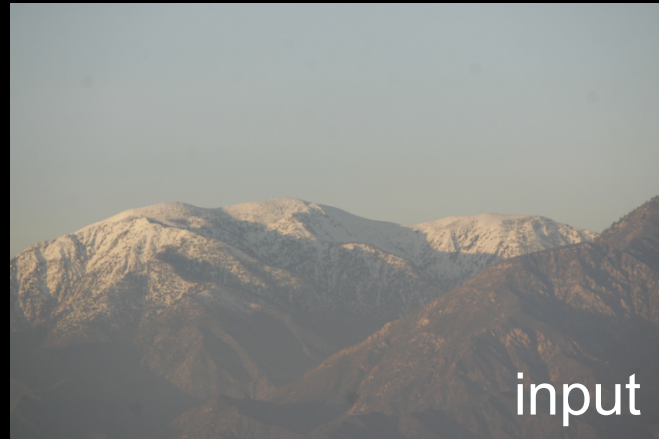


Our choice

Figure 10 in the paper

Internal Comparison

Impact of Outlier Rejection



input



without rejection



with rejection



input



without rejection



with rejection

Narrow angle outlier rejection

Dehazing using Non-Local Regularization with Iso-Depth Neighbor-Fields

Supplemental Material

Incheol Kim

Min H. Kim

Korea Advanced Institute of Science and Technology (KAIST)